

LGG17MB-LGG18/P-MB

Espositori a leggio

SCHEMA TECNICA








LGG17-MB






LGG18/P-MB



STRUTTURA

-  **MATERIALE STRUTTURA:** metallo
-  **FINITURA STRUTTURA:** verniciata bianco RAL 9003
-  **MATERIALE TASCA:** metacrilato
-  **FINITURA TASCA:** trasparente
-  **INDOOR**

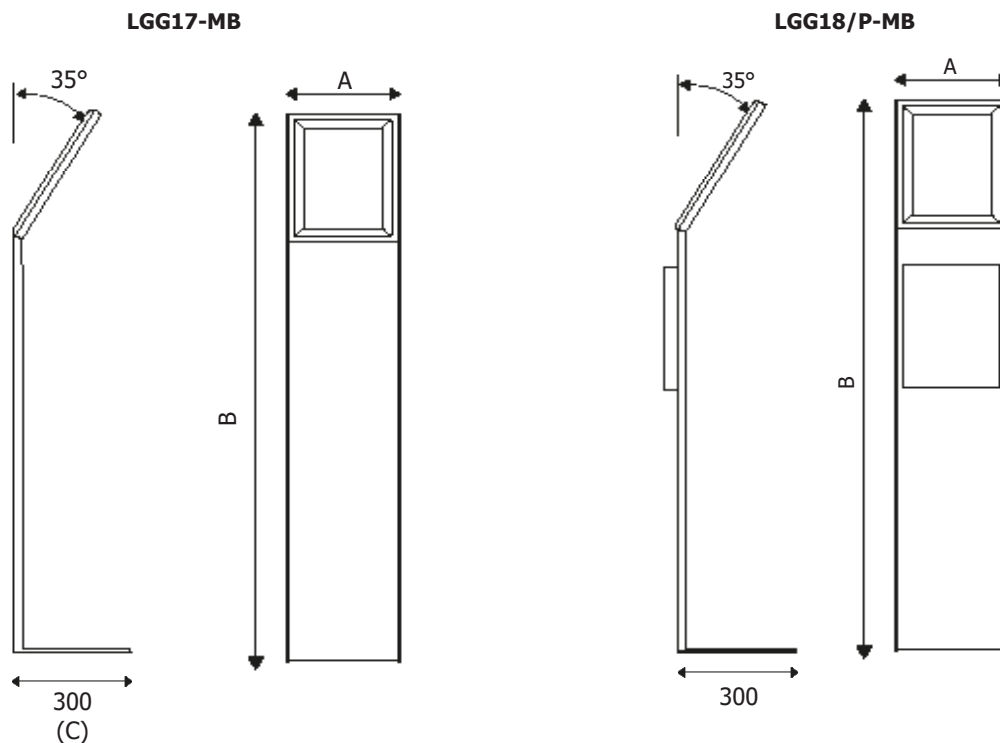
GRAFICA

-  **GRAFICA INTERCAMBIABILE**
-  **MONOFACCIALE**
-  **PERSONALIZZABILE**

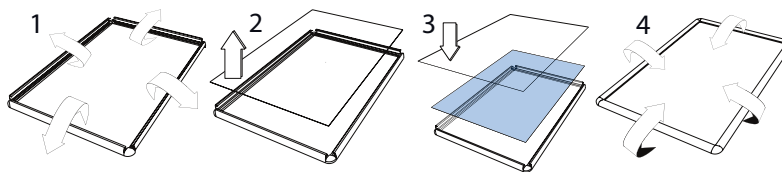
Leggio da terra autoportante in metallo spessore 4 mm verniciato a polveri bianco con base a L. Possibilità di personalizzare la struttura con grafica ad hoc in vinile.

LGG17-MB: una cornice a scatto ad angoli vivi per formati A4

LGG18/P-MB: una cornice a scatto ad angoli vivi ed una tasca porta depliant entrambe per formato A4



SISTEMA APERTURA A SCATTO


DIMENSIONI PRODOTTO (mm)

Codice	F.to tasche	N. cornici a scatto	N. portadepliant	Dim. struttura (AxBxC)	Cod. EAN
LGG17/MB	A4	1	-	245x1030x300	0768855777880
LGG18/P-MB	A4	1	1	245x1030x300	0768855794214

MISURE IMBALLO (mm/kg)

Codice	Dim. imballo	Peso art.	Peso art. e imballo
LGG17/MB	380x1100x310	11.46	12,20
LGG18/P-MB	380x1100x310	11.46	12,20